



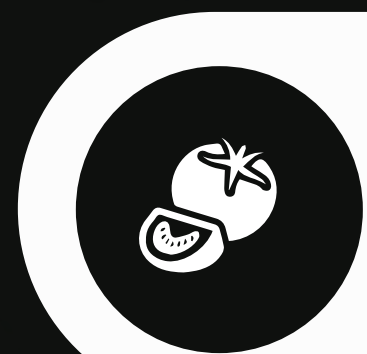
Barkhill Foods

the taste of great quality



TOMATO PASTE

barkhillgroup.com | mail@barkhillfoods.com | +45 5916 00 00



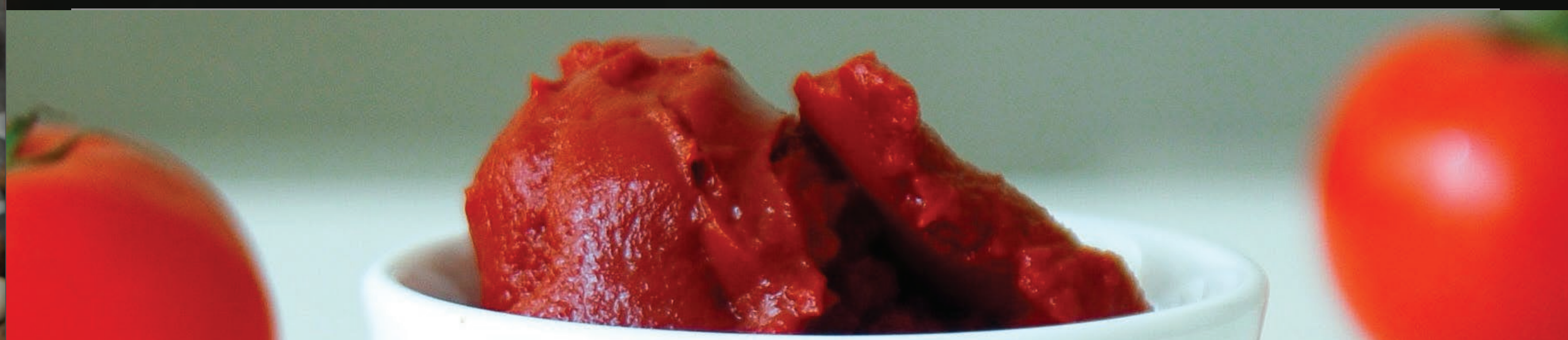
ASEPTIC TOMATO PASTE

Aseptic Tomato Paste production process involve some processing like as washing and sorting of fresh tomatoes, crushing and pre-heating, juice extraction and refining of pepper juice (tomato pulp). Its shelf life is 2 years. There is no any additives.

ORGANOLEPTICAL PROPERTIES	SPECIFICATION
COLOUR	TYPICAL RED COLOUR
ODOUR	DISTINCTIVE
TASTE	DISTINCTIVE
APPEARANCE	DISTINCTIVE

PHYSICAL PROPERTIES	LIMIT	REFERENCE METHODS
COLOUR	min. 2,0	TS 1466
Hunter lab 12 bx, a/b		
Brix	min. 28	AOAC 970.59
FOREIGN MATTER	None	-
pH	max. 4.50	AOAC 981.12
VISCOSITY	3,0-6,0	Bostwickmeter Method
(Bostwick 12 Bx,cenco, 30 second, cm)		
%HMC	60	TS 6580

CHEMICAL PROPERTIES	LIMIT	REFERENCE METHODS
%SALT	No salt addition	TS 2664



MICROBIOLOGICAL PROP.	LIMIT(cfu/g)	REFERENCE METHODS
TOTAL BACTERIA	Max: 100	ISO 4833
YEAST - MOULD	Max:10	TS 6580
ANEROBIC MICROORGANISMS	No Growth	TS 2664
INCUBATION CONTROLS		



TOMATO PASTE BARREL 220KG

PRODUCT TYPE	PRODUCT NAME	REMARK
TOMATO PASTE in drum	Brix 36/38 Cold Break	Barrel body: 0.7mm 4 drums/pallet,
	Bostwick: 6-10 cm/30 sec.	80 drums/20'fcl
	ColourA/B: 2.10 min(Gardner)	Thickness of barrel cover and d
	HMC:	bottom cover: 0.8mm Barrel hoop:
	60% max.	thickness od barrel hoop:1.2mm
	PH:	Zine layer is not less than 0.01mm
	4.5 max.	Inner diameter of barrel bottom:
	Brix 30/32 Cold or Hot Break	516(±3)mm Inner diameter of barrel
	Bostwick: 6-10 max/30 sec. (CB) 6	open: 553(±3)mm
	max/30 sec.(HB)	Extetal height of barrel:
	ColourA/B: 2.00 min(Gardner)	990(+3)mm
	60% max.	Barrel wall: with a reinforcement ring
	HMC:	bar of 20(+2)mm
	PH:	wide 8(+2)mm
	4.5 max.	high 100mm-130mm
	Brix 28/30 Cold or Hot Break	away from the open of the steel
	Bostwick: 6-10 max/30 sec.(CB) 6	barrel Weight: total weight of bar-
	max/20 sec.(HB)	rel13.5-14.5kg Capacity: 55 Gallon
ColourA/B: 2.00 min(Gardner)	(250kg)	
60% max.	Size and clearance of outer profile	
HMC:	of tray: 1050(+6)mmx1050(+6)m-	
PH:	m×120(+4)mm	
4.5 max.	Tray Weight: 18(+0.5)kg	



PACKAGING SIZE

240 kgs net weight in aseptic bag packed in iron drum Barrel body: 0.7mm 4 drums/pallet, 80 drums/20'fcl



TOMATO PULP BARREL 220KG

PRODUCT TYPE	PRODUCT NAME	REMARK
TOMATO PULP in drum	Brix 36/38 Cold Break	Barrel body: 0.7mm 4 drums/pallet,
	Bostwick: 6-10 cm/30 sec.	80 drums/20'fcl
	ColourA/B: 2.10 min(Gardner)	Thickness of barrel cover and d
	HMC:	bottom cover: 0.8mm Barrel hoop:
	60% max.	thickness od barrel hoop:1.2mm
	PH:	Zine layer is not less than 0.01mm
	4.5 max.	Inner diameter of barrel bottom:
	Brix 30/32 Cold or Hot Break	516(±3)mm Inner diameter of barrel
	Bostwick: 6-10 max/30 sec. (CB) 6	open: 553(±3)mm
	max/30 sec.(HB)	Extetal height of barrel:
	ColourA/B: 2.00 min(Gardner)	990(+3)mm
	60% max.	Barrel wall: with a reinforcement ring
	HMC:	bar of 20(+2)mm
	PH:	wide 8(+2)mm
	4.5 max.	high 100mm-130mm
	Brix 28/30 Cold or Hot Break	away from the open of the steel
Bostwick: 6-10 max/30 sec.(CB) 6	barrel Weight: total weight of bar-	
max/20 sec.(HB)	rel13.5-14.5kg Capacity: 55 Gallon	
ColourA/B: 2.00 min(Gardner)	(250kg)	
60% max.	Size and clearance of outer profile	
HMC:	of tray: 1050(+6)mmx1050(+6)m-	
PH:	m×120(+4)mm	
4.5 max.	Tray Weight: 18(+0.5)kg	



PACKAGING SIZE

240 kgs net weight in aseptic bag packed in iron drum Barrel body: 0.7mm 4 drums/pallet, 80 drums/20'fcl



Barkhill Foods

the taste of great quality

BARKHILLFOODS.COM - MAIL@BARKHILLFOODS.COM

BUCHAREST +40 31 229 7009

COPENHAGEN +45 59 16 00 00

LIMASSOL +357 25 28 1850

SOFIA +359 24 93 1370

STOCKHOLM +46 8 12 443 200

KIEV +380 738 50 00 00

COMPANY REGISTRATION NO.: R026223359

HYPERION TOWERS, BULEVARDUL PIPERA 1, VOLUNTARI, ROMANIA